

*amina*®  
TECHNOLOGIES Ltd

# invisible loudspeakers

Unparalleled sound quality,  
totally invisible to you and your guests.



# Invisible Loudspeakers for Inspirational Homes

Enhance your property, whatever its style or age, with a modern entertainment system based around Amina Invisible Loudspeakers. They create the perfect high fidelity, room filling audio solution with no unsightly interruption in your ceilings or walls, allowing you to focus on the important things in life: the design and decoration of your home and your ability to relax in the surroundings you have created.

Amina loudspeakers are normally installed below a final skim coat of finishing plaster or drywall compound, but they can also be successfully installed in wood paneling and other surface materials. Walls and ceilings are then painted or wallpapered to taste.

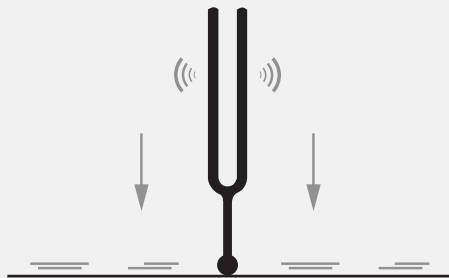
From the creation of natural background music around your home, to amazingly lifelike cinema surround in your living room or bedroom, transform your period home or contemporary living space into an entertainment dream machine.

Enjoy your home, and your entertainment technology, without the visual intrusion of speakers, stands and cables.

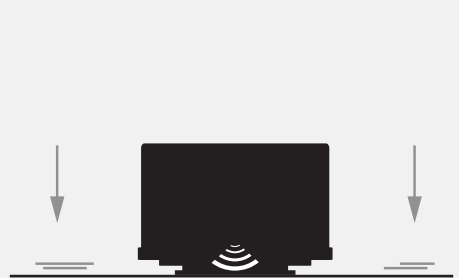
## How it works

The idea that sound can only be made electrically by the piston based cone speaker we have known for over a century is a misnomer. Sound can also be made by using the millennia old principles of the vibrating or resonant surface musical instrument (e.g. the guitar, violin or piano). By replacing the strings on the musical instrument with a powerful full range electrical tuning fork (we call it an exciter), and by replacing the shaped body of the musical instrument with modern lightweight composites, we have created a low profile, highly effective 'sound instrument' that can be controlled and driven by conventional audio amplifiers and your choice of audio source, be it the TV, radio, CD or of course modern digital streaming or storage devices.

Tuning fork:



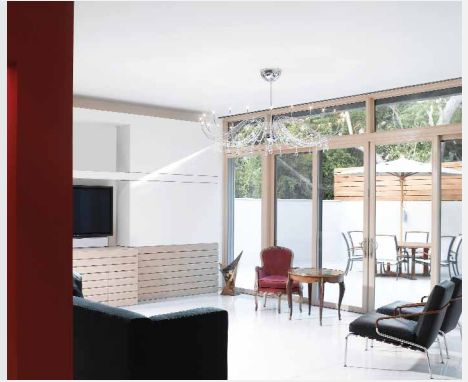
Amina Exciter:



# Installations

## Modern, minimalist —

In completely renovating their home near Tel Aviv, this Israeli couple had a clear vision that they wanted a stunning minimalist interior with zero clutter. In choosing Amina, their interior designer successfully created a contemporary design with lightly coloured decor to provide a striking, light and airy, open plan environment. The result was a home to be proud of and a wonderful place to entertain family and friends.



## Wet areas and pools —

These days no pool is complete without the latest AV equipment - this was no exception. The system had to blend seamlessly with the decor around the pool. Most of the technology can be hidden however, how do you install loudspeakers safely and reliably without leaving a blemish on the interior design? The answer – Amina Invisible Loudspeakers!



## Invisible sound for discerning travellers —

Rich woods, plush fabrics, engaging artwork, sumptuous design and incredible locations are the hallmarks of one of the most respected hotel chains in the world; Mandarin Oriental. The hotel chain recently adopted Amina Invisible Loudspeakers within the veneered wooden ceiling in the Mandarin Grille restaurant in Kuala Lumpur



# Installations

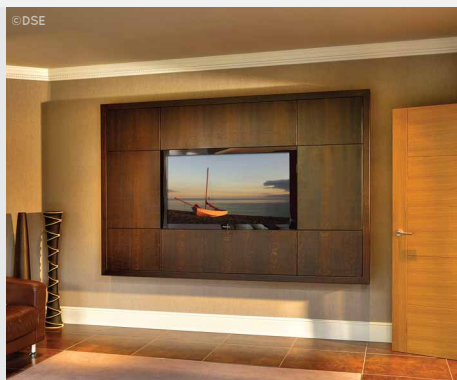
## Heritage engineering —

Historic property, Tunnel House, originally owned by Isambard Kingdom Brunel was transformed by its new owner, with cutting edge technology whilst combining traditional methods and materials such as lime plaster. The result is an elegant and beautiful family home uniting a meticulously detailed restoration with 21st century innovation through the adoption of the latest AV technology including Amina Invisible Loudspeakers.



## Wood you believe it?! —

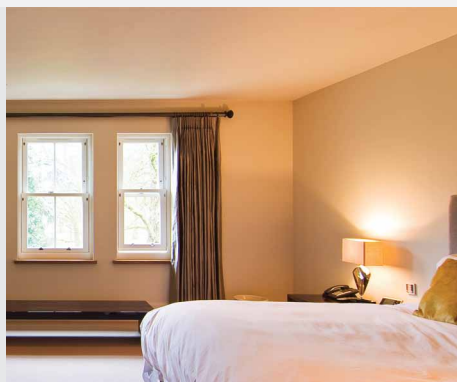
For installations behind wood, Amina can supply speakers with a special adhesive already in place. This results in a strong, permanent bond between the front panel of the speaker and the material. This room in Castle Dean boasts a bespoke piece of furniture creating a surround for a 50-inch plasma tv screen incorporating Amina Invisible Loudspeakers.



## Amina in hotels —

Amina are now becoming a supplier choice for 5\* hotels and their interior designers when selecting high quality discrete sound systems.

The Amina Invisible Loudspeakers are the perfect solution for hotels wishing to keep their interiors as minimalist and stylish as possible all the while having the ability to create a suitable ambience for guests and visitors.



# Evolution Series

## AIW150E —

- Suitable for low powered audio systems including bathrooms and bedrooms
- 15W continuous / 30W peak power handling
- Nominal impedance – 8 Ohms
- Sensitivity – 82dB 1m/ 2.83Vrms
- Dimensions – 450mm x 345mm x 40mm
- Weight – 1kg



## AIW350E —

- Suitable for low/medium powered audio systems including living and dining rooms
- 30W continuous / 60W peak power handling
- Nominal impedance – 8 Ohms
- Sensitivity – 84dB 1m/ 2.83Vrms
- Dimensions – 450mm x 345mm x 40mm
- Weight – 1.2kg



## AIW550E —

- Suitable for high powered home audio systems, home cinema and commercial facilities
- 50W continuous / 100W peak power handling
- Nominal impedance – 4 Ohms
- Sensitivity – 87dB 1m/ 2.83Vrms
- Dimensions – 450mm x 345mm x 40mm
- Weight – 1.48kg



Easy to install into drywalls or ceilings. Simply skim over with a finishing coat of plaster. All Amina Evolution speakers feature new technologies providing superior mid-range and treble quality.

## A Sound Investment —

Remember, your walls or ceilings are simply redecorated, furniture changed or re-covered, fixtures changed, all to give you a brand new room, without having to replace any speakers to keep up with current trends.

The initial investment in an Amina Invisible Loudspeaker is not lost should you move home. In fact, fitting Amina products in your home as part of a modern entertainment and automation system can make your home more appealing to potential buyers.

# Further Information



Made in the United Kingdom since 1999

## Warranty —

All Amina Invisible Loudspeakers, purchased through and installed by experienced and authorised professionals are warranted against defective workmanship for ten years. Amina will provide a like for like replacement at no charge should a product experience a fault caused by manufacturing defects during the warranty period.

Under our policy of continuous improvement, we reserve the right to change specifications without prior notice. E&OA.

We advise the use of a professional to install our product in your home. A trained Audio installer (e.g a CEDIA member) knows just what to look out for in installing and integrating our product with your existing electronics or a new entertainment system.

To understand how the professional will install Amina Invisible Loudspeakers into your property please visit our home page and select our video installation overview.

Contact Amina to arrange free RIBA CPD seminars



Amina is a registered trademark of Amina Technologies Ltd.  
Copyright Amina Technologies Ltd, United Kingdom  
Amina technologies Ltd,  
Cirrus House, Huntingdon, Cambridgeshire, PE29 7DL, UK

Document: Marketing 2012 v1.0  
Printed in UK

T: +44 (0) 1480 354390 / F: +44 (0) 1480 356564  
W: [www.amina.co.uk](http://www.amina.co.uk) / E: [inspired@amina.co.uk](mailto:inspired@amina.co.uk)  
VAT registration no: 728 2595 09 / Company Registration no: 3656822